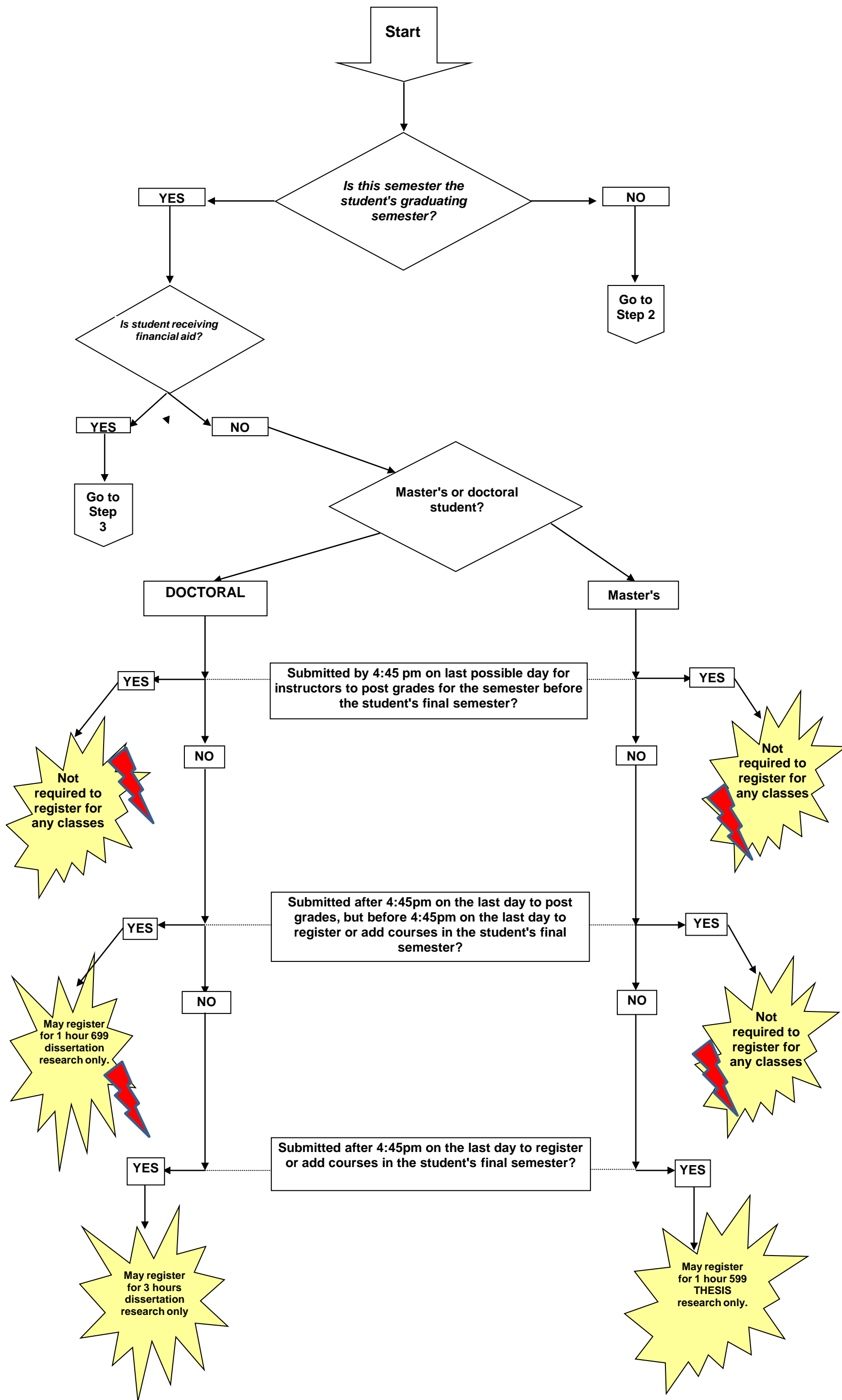
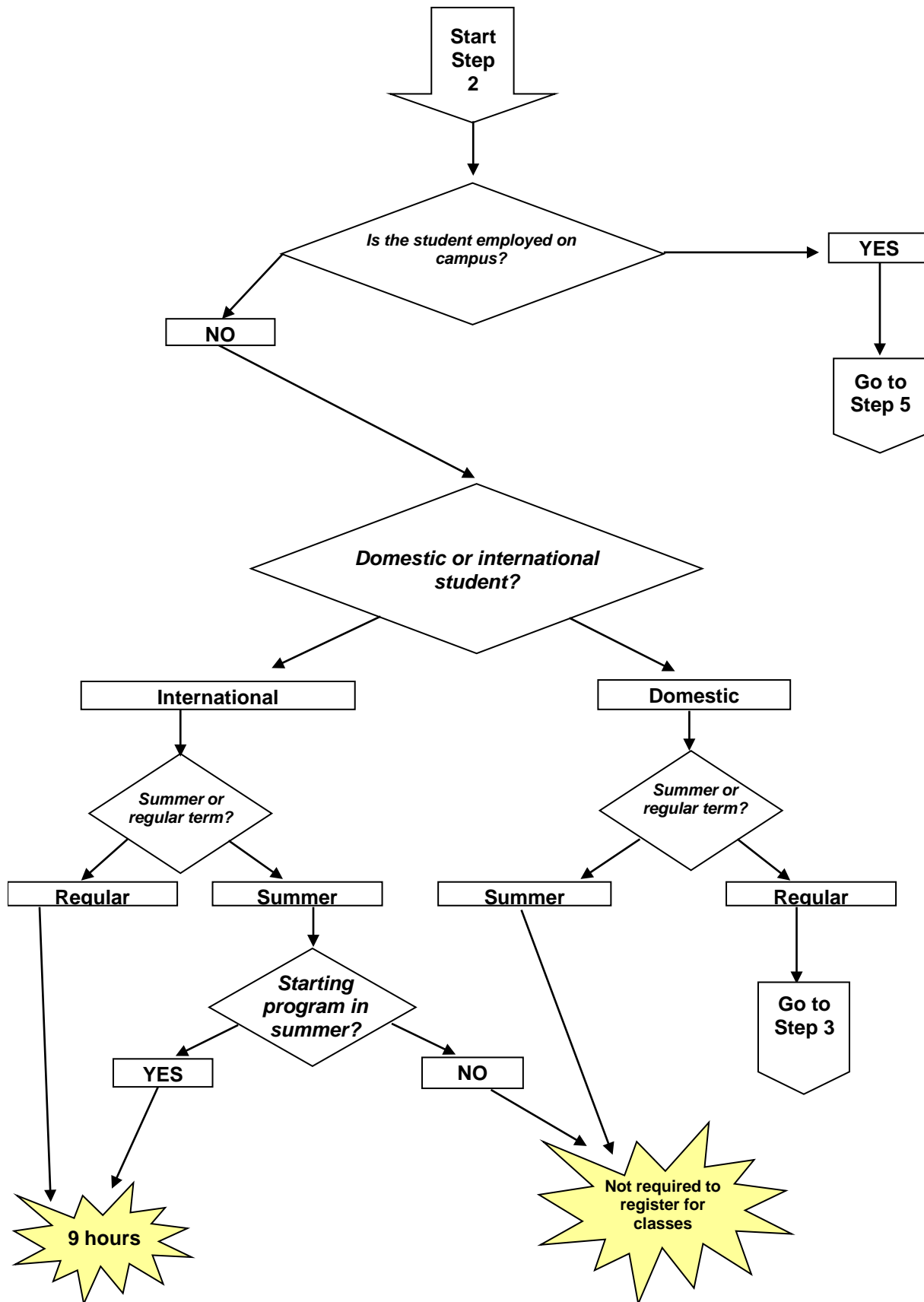


GRADUATE STUDENT
MINIMUM REGISTRATION REQUIREMENTS

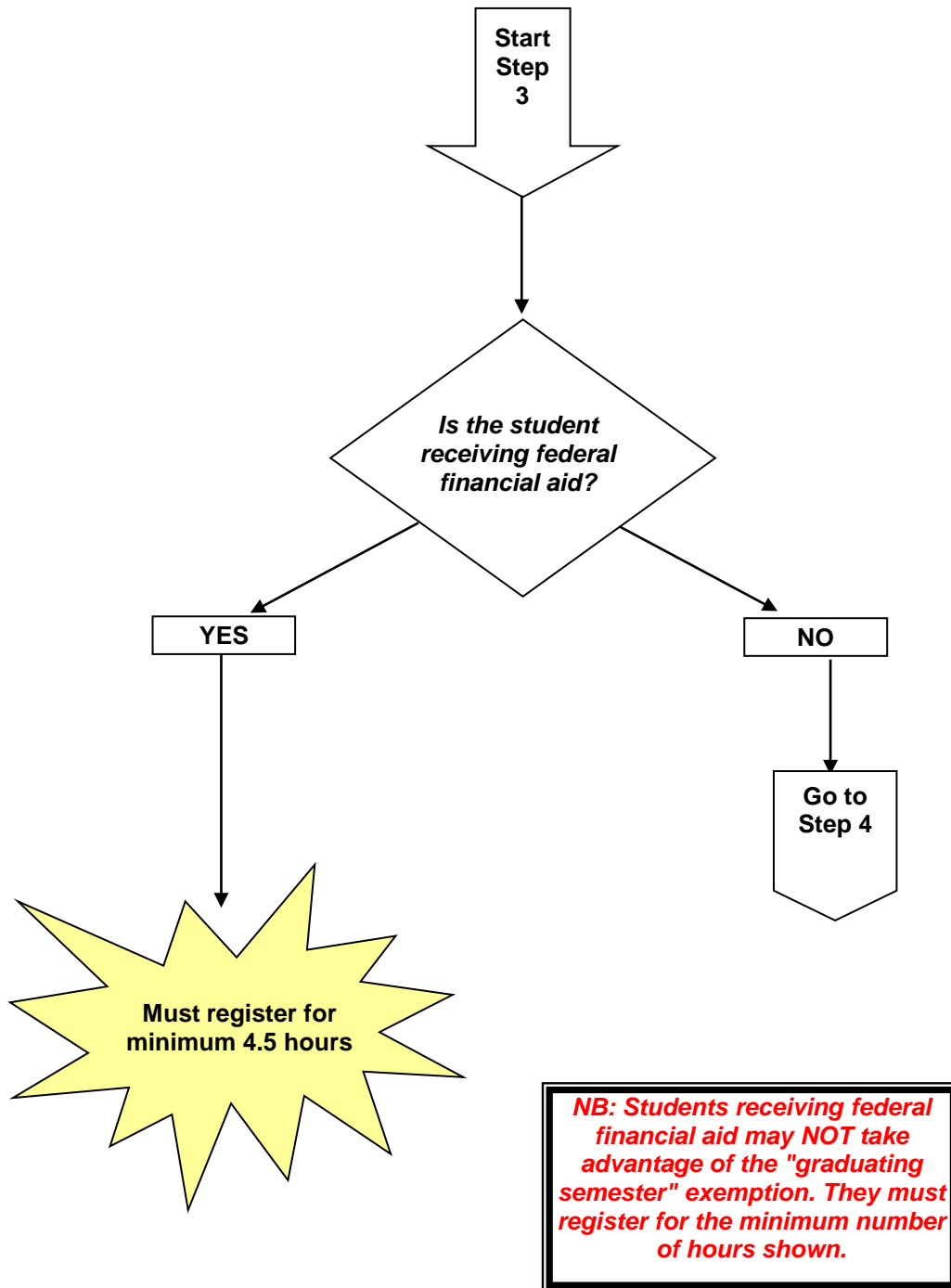


NOTE: THESE SPECIAL DISPENSATIONS HIGHLIGHTED THUS ARE ALWAYS OVERRIDDEN WHERE A STUDENT IS EMPLOYED EITHER AS A STUDENT ASSISTANT OR A GRADUATE ASSISTANT. SEE STEP 5 FOR MINIMUM REGISTRATION REQUIREMENTS IN THOSE SITUATIONS.

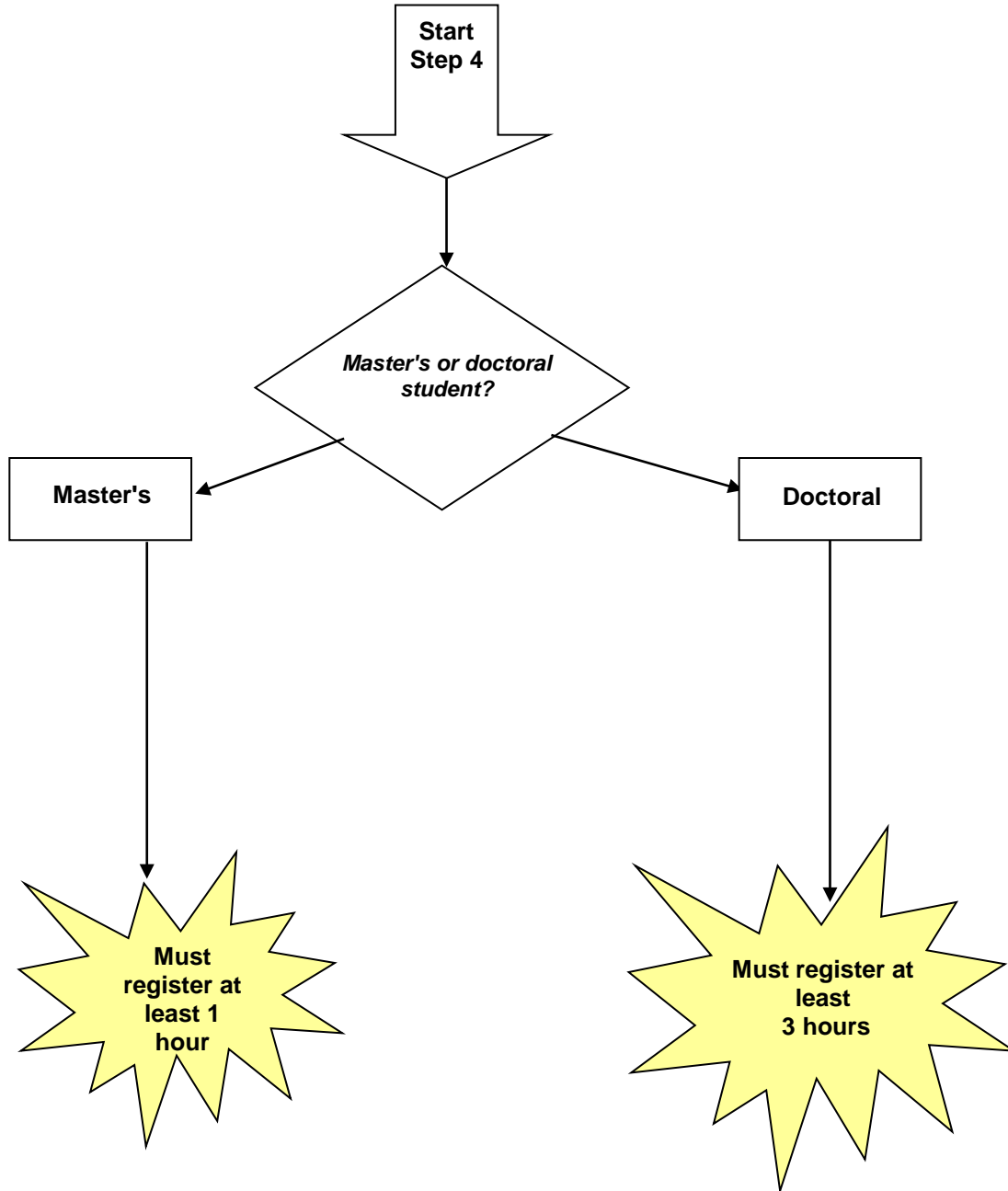
GRADUATE STUDENT
MINIMUM REGISTRATION REQUIREMENTS



GRADUATE STUDENT
MINIMUM REGISTRATION REQUIREMENTS



GRADUATE STUDENT
MINIMUM REGISTRATION REQUIREMENTS



GRADUATE STUDENT
MINIMUM REGISTRATION REQUIREMENTS

